

## Using Drawings

Journeypersons working on a construction site follow specifications from a set of drawings or prints that show different views of the finished building project. Journeypersons in all trades scan the drawings for the detailed information they need.

Journeypersons often convert inches to fractions or decimals of a foot.

3 in. =  $\frac{1}{4}$  ft. or 0.25 ft.    6 in. =  $\frac{1}{2}$  ft. or 0.5 ft.    9 in. =  $\frac{3}{4}$  ft. or 0.75 ft.    12 in. = 1.0 ft.

### Adding and subtracting feet and inches:

Step 1: Line up the measurements so that like units are under like units.

Step 2: Add or subtract the inches. Add or subtract the feet.

Step 3: Change the inches to feet (divide by 12).

Step 4: Add your answer from step 3 to the number of feet from step 2.

### Example:

Step 1	Step 2	Step 3	Step 4
$\begin{array}{r} 7 \text{ ft. } 11 \text{ in.} \\ + 2 \text{ ft. } 9 \text{ in.} \\ \hline \end{array}$	$\begin{array}{r} 7 \text{ ft. } 11 \text{ in.} \\ + 2 \text{ ft. } 9 \text{ in.} \\ \hline 9 \text{ ft. } 20 \text{ in.} \end{array}$	$20 \text{ in.} = 1 \text{ ft. } 8 \text{ in.}$	$\begin{array}{r} 9 \text{ ft.} \\ + 1 \text{ ft. } 8 \text{ in.} \\ \hline 10 \text{ ft. } 8 \text{ in.} \end{array}$

Look at the drawings for a residence on the next page to complete the questions below.

- The walk-in closet measures  $1\frac{1}{4}$  in.  $\times$   $1\frac{1}{2}$  in. on the drawing. What are the actual dimensions of the closet?
- How many pocket (sliding) doors are needed?

Pocket door

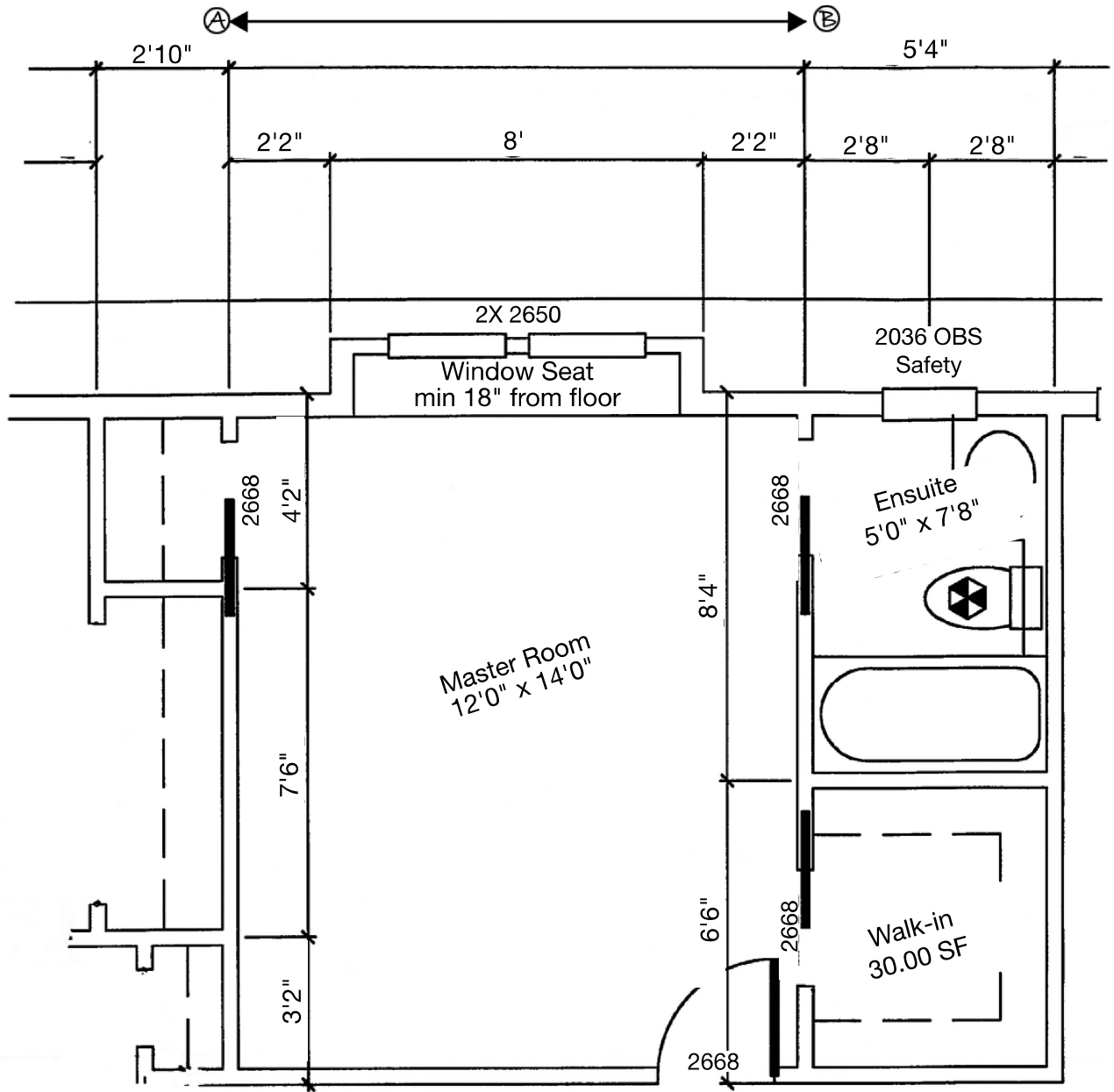


- What is the exterior length from (A) to (B)?
- Carpet costs \$28.50 per square yard. What is the cost of carpet for the master bedroom and closet?

$$1 \text{ yd.}^2 = 9 \text{ ft.}^2$$

- Estimate the number of drywall sheets needed for the walls of the ensuite bathroom.

Drywall sheets: 4 ft.  $\times$  8 ft.  
 Height of room: 8 ft.  
 Width of pocket door: 3 ft.



Of — sheet  <span style="font-size: 2em; font-weight: bold;">A</span> <span style="font-size: 2em; font-weight: bold;">3</span>	Sheet	Date <b>SEPT 20</b>	
		Scale <b>1/4" = 1'0"</b>	
		Job <b>2K1-09271</b>	
		Drawn <b>F</b>	