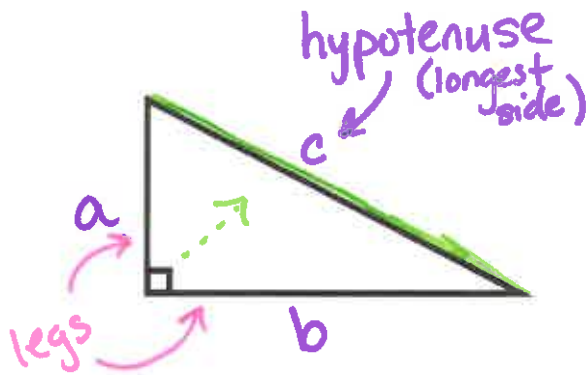


Apprenticeship Math 12
 Pythagorean Theorem Review

Name: _____

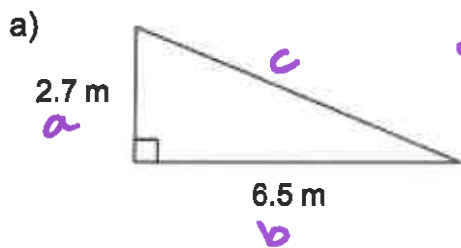
Date: _____



$$a^2 + b^2 = c^2$$

↑
 must be
 the
 hypenuse.

1. Find each missing length. Round your answers to the nearest tenth.



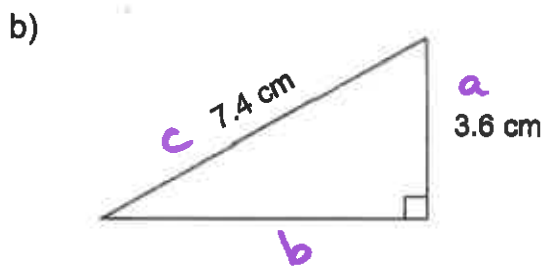
$$2.7^2 + 6.5^2 = c^2$$

$$49.54 = c^2$$

$$\sqrt{49.54} = c$$

$$7.038... = c$$

7.0 m



$$3.6^2 + b^2 = 7.4^2$$

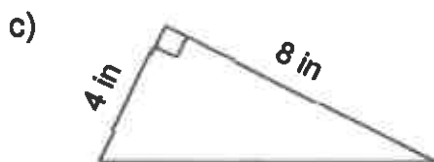
$$b^2 = 7.4^2 - 3.6^2$$

$$b^2 = 41.8$$

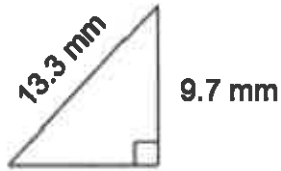
$$b = \sqrt{41.8}$$

$$b = 6.465...$$

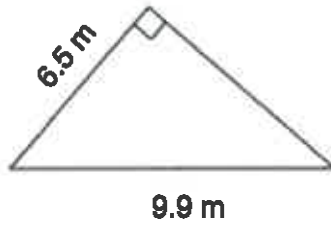
6.5 cm



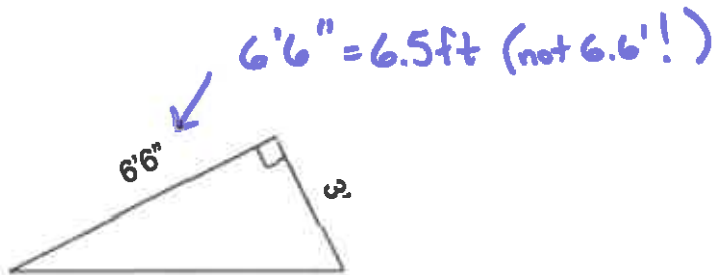
d)



e)



f)



2. Do the following lengths form a right triangle?

a) 2.5 cm, 5.5 cm, 6.5 cm

a b c

does
 $a^2 + b^2 = c^2$?
 $2.5^2 + 5.5^2 \neq 6.5^2$
 $36.5 \neq 42.25$

NO!

not equal
(not a right Δ)

b) 6 ft, 8 ft, 9 ft

c) 2.1 m, 7.2 m, 7.5 m
